

## 54 CHASSIS ELECTRICAL

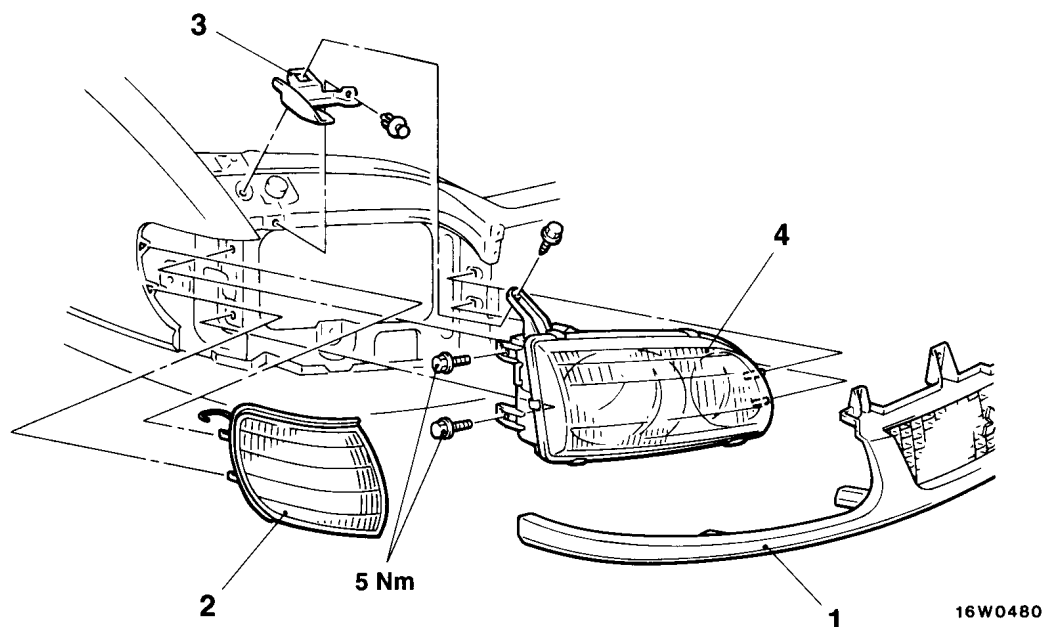
### GENERAL

#### OUTLINE OF CHANGES

- The following maintenance service points have been changed to correspond to the change of headlamp.
- The following maintenance service points have been changed to correspond to the change of front combination lamp and front turn-signal lamp.
- The following maintenance service points have been added to correspond to the adoption of high-mounted stop lamp.

### HEADLAMP

#### REMOVAL AND INSTALLATION

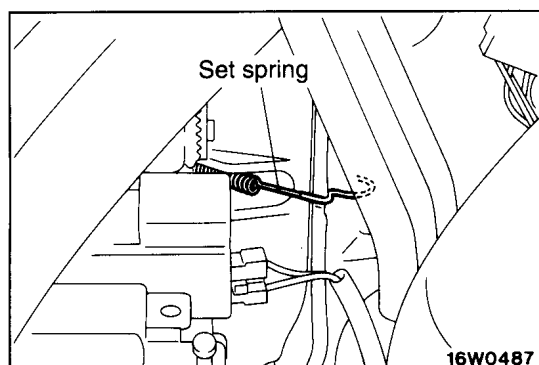


#### Removal steps

1. Radiator grille (Refer to GROUP 51 – Radiator Grille.)
2. Front combination lamp



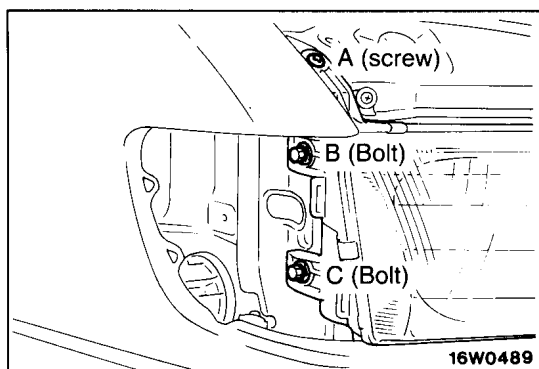
3. Cover (right side only)
4. Headlamp



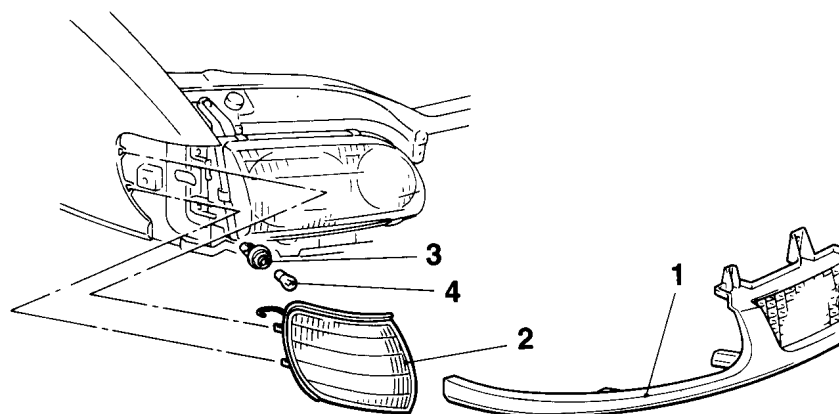
#### REMOVAL SERVICE POINT

##### ◀A▶ FRONT COMBINATION LAMP REMOVAL

Remove the set spring and pull the front combination lamp toward the front of vehicle.

**INSTALLATION SERVICE POINT****►A◄ HEADLAMP INSTALLATION**

Tighten the screw and bolts in the order of A, B, C.

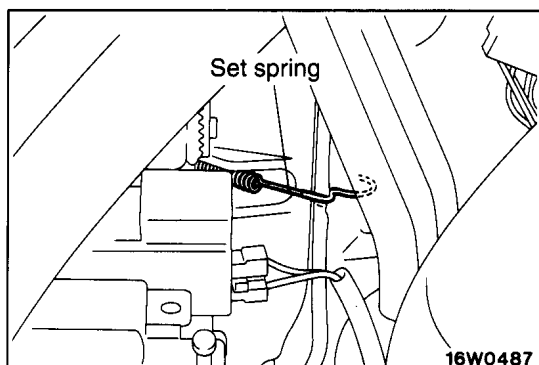
**FRONT COMBINATION LAMP****REMOVAL AND INSTALLATION****Removal steps**

1. Radiator grille (Refer to GROUP 51 – Radiator Grille.)
2. Front combination lamp

3. Bulb socket
4. Bulb

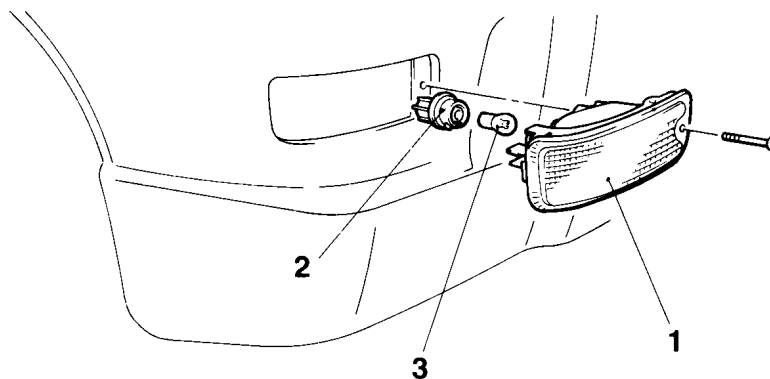
**REMOVAL SERVICE POINT****◄A► FRONT COMBINATION LAMP REMOVAL**

Remove the set spring and pull the front combination lamp toward the front of vehicle.



### FRONT TURN-SIGNAL LAMP

#### REMOVAL AND INSTALLATION



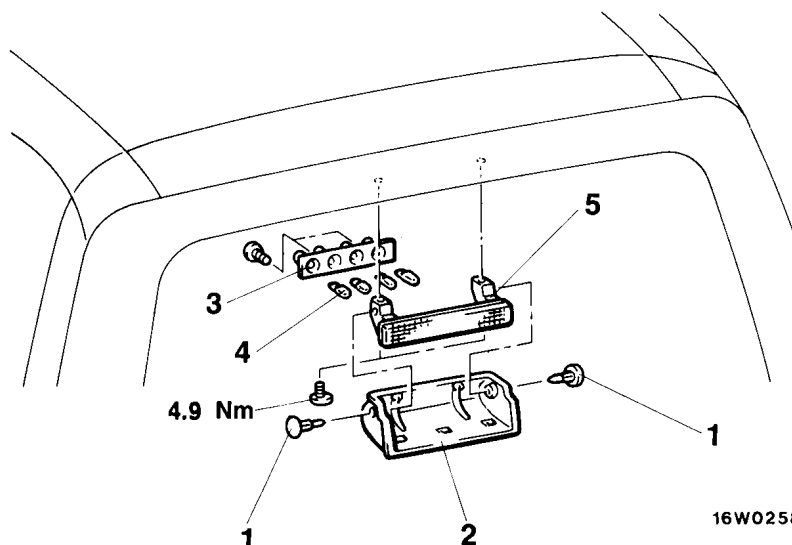
16W0482

#### Removal steps

1. Front turn-signal lamp
2. Bulb socket
3. Bulb

### HIGH-MOUNTED STOP LAMP

#### REMOVAL AND INSTALLATION



16W0258

#### Removal steps

1. Clip
2. High-mounted stop lamp cover
3. Bulb socket assembly
4. Bulb
5. High-mounted stop lamp