

42 BODY

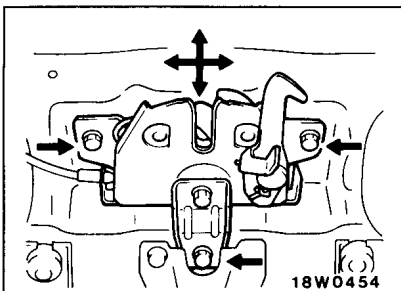
GENERAL

OUTLINE OF CHANGES

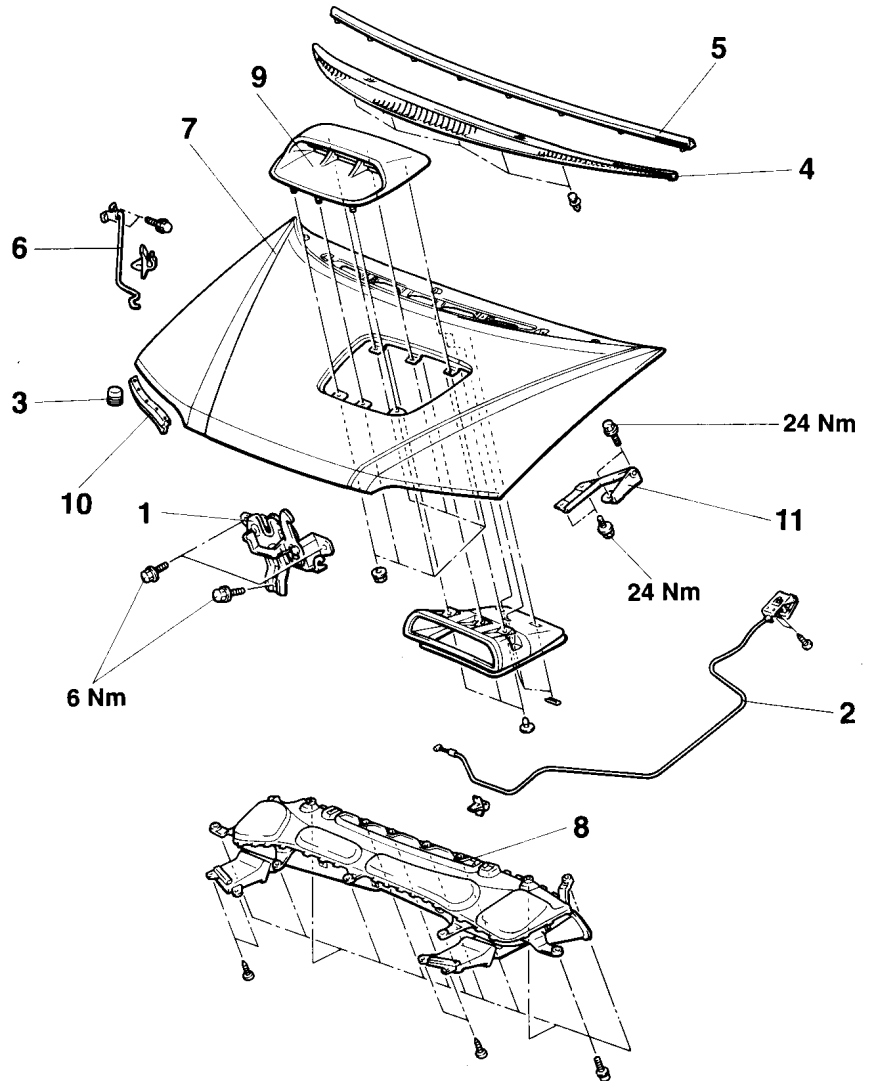
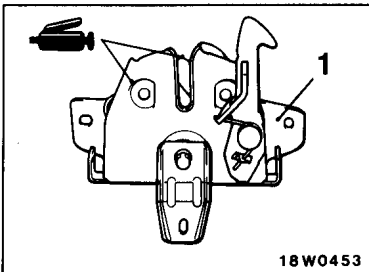
- The following maintenance service points have been changed to correspond to the change of hood and hood latch.
- The following maintenance service points have been changed to correspond to the change of front fender.

HOOD

REMOVAL AND INSTALLATION



Hood latch and hood striker linkage adjustment



1. Hood latch
2. Hood lock release cable
3. Hood bumper
4. Hood end garnish
5. Hood weatherstrip
6. Hood support rod

Hood and hood hinge removal steps

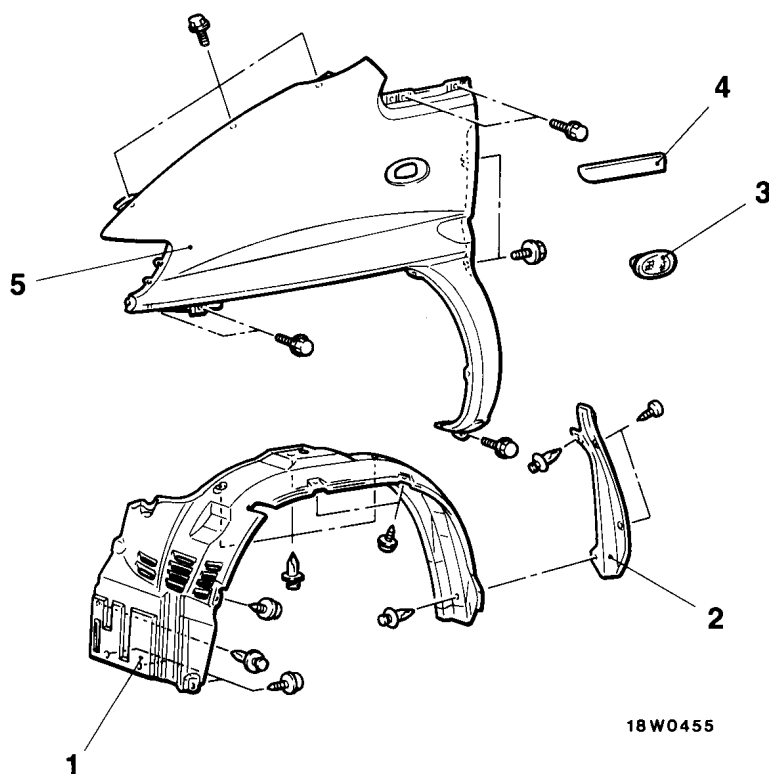
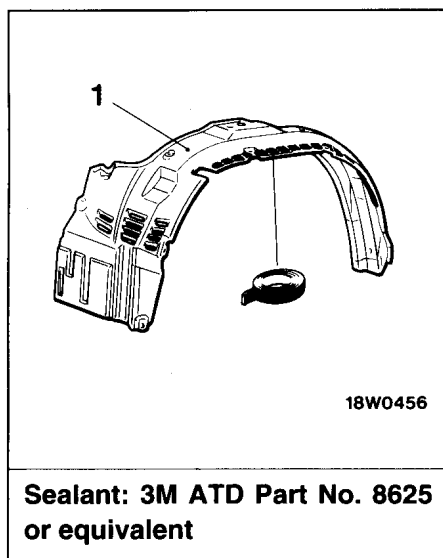
- Washer hose (Refer to GROUP 51 – Windshield wiper and washer.)
- 7. Hood
- 8. Air intake duct assembly
- 9. Hood air intake garnish
<Wagon with 4D5 T/C engine>
- 10. Hood front weatherstrip
- 11. Hood hinge

FENDER

REMOVAL AND INSTALLATION

Pre-removal and Post-installation Operation

- Front Combination Lamp Removal and Installation (Refer to GROUP 54 – Front Combination Lamp.)
- Radiator Grille Removal and Installation (Refer to GROUP 51 – Radiator Grille.)
- Front Bumper Removal and Installation (Refer to GROUP 51 – Front Bumper.)

**Removal steps**

1. Splash shield
2. Front pillar cover
3. Side turn-signal lamp
4. Delta window glass garnish
5. Fender